

# Online Strategies for Special Education Teachers

Mindy Hintze, VP of Services



**eLuma**  
online therapy



# Mindy Hintze

- VP Services, eLuma
- Educator
- Mental Health Counselor
- EdTech Specialist
- Chocolate Lover
- Freaky Fast Reader
- Stick Shift Driver
- [mhintze@elumatherapy.com](mailto:mhintze@elumatherapy.com)
- Twitter: @mindyhintze

# Learn about:

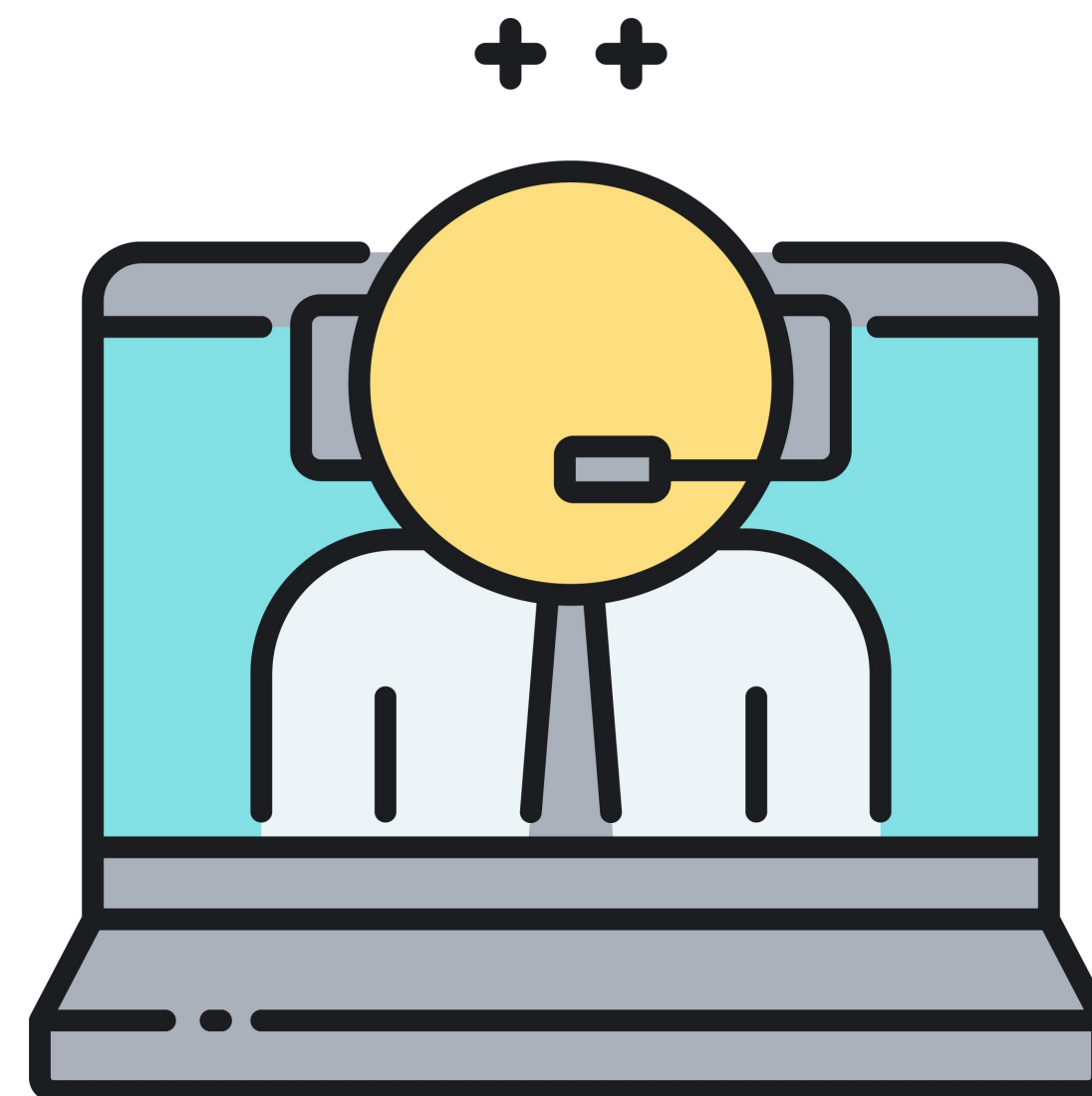
## Trauma-Informed Approach to Teaching

Recommendations from experts from the National Child Traumatic Stress Network



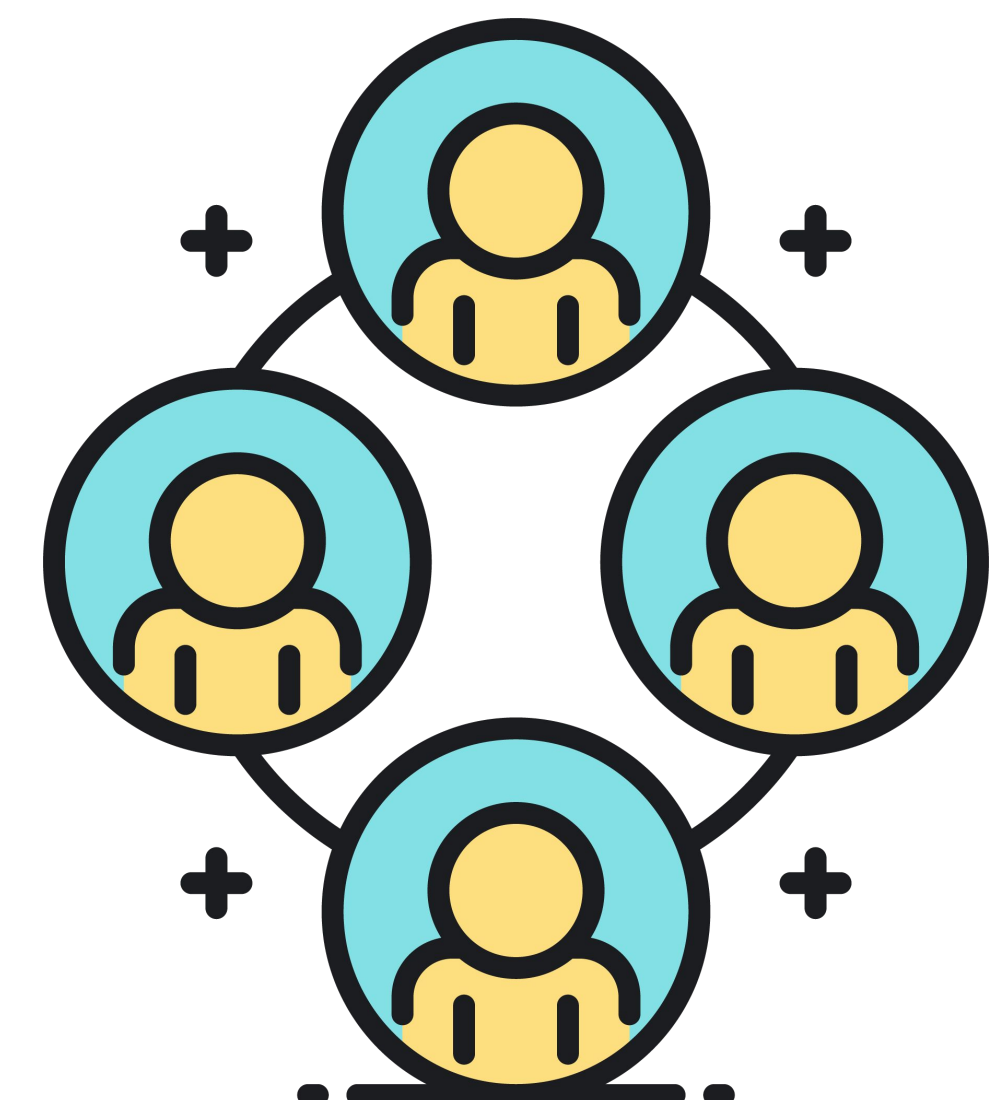
## Moving to Online Teaching

Tips to get started with online teaching.



## Universal Design for Learning

Design framework to optimize teaching and learning for all people.



## G. R.

- 10th grader
- ADHD, Dyslexia, Dysgraphia, Processing disorders
- Youngest of 5 kids
- Father passed away in 2016
- PTSD
- Concussions

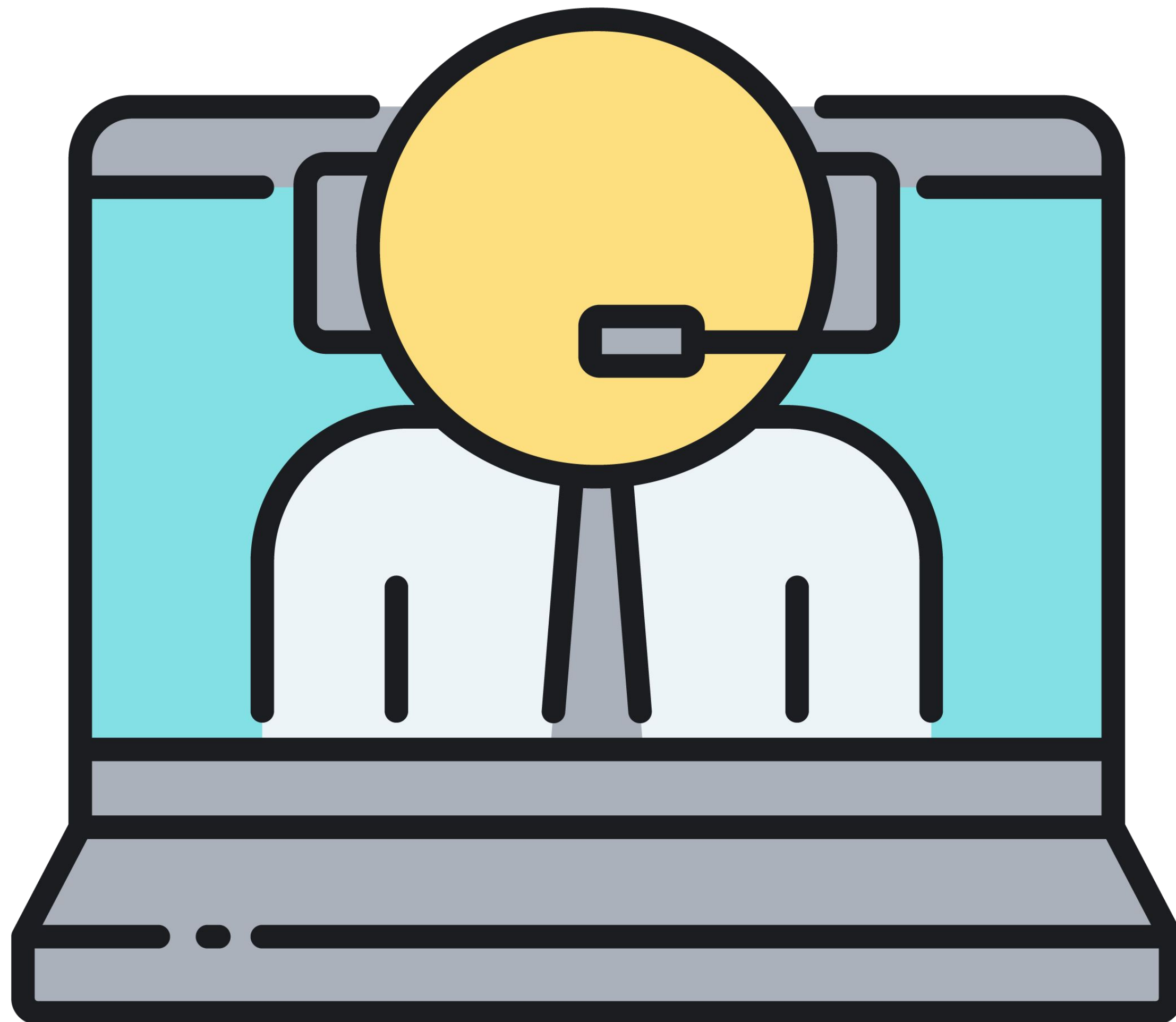
# Trauma-Informed Approach to Teaching

- Establish a routine
- Clear communication
- Relationships and well-being are more important than assignment completion or behavioral compliance
- Sense of Safety
- Promote emotional self-regulation
- Practice self-kindness



+

+

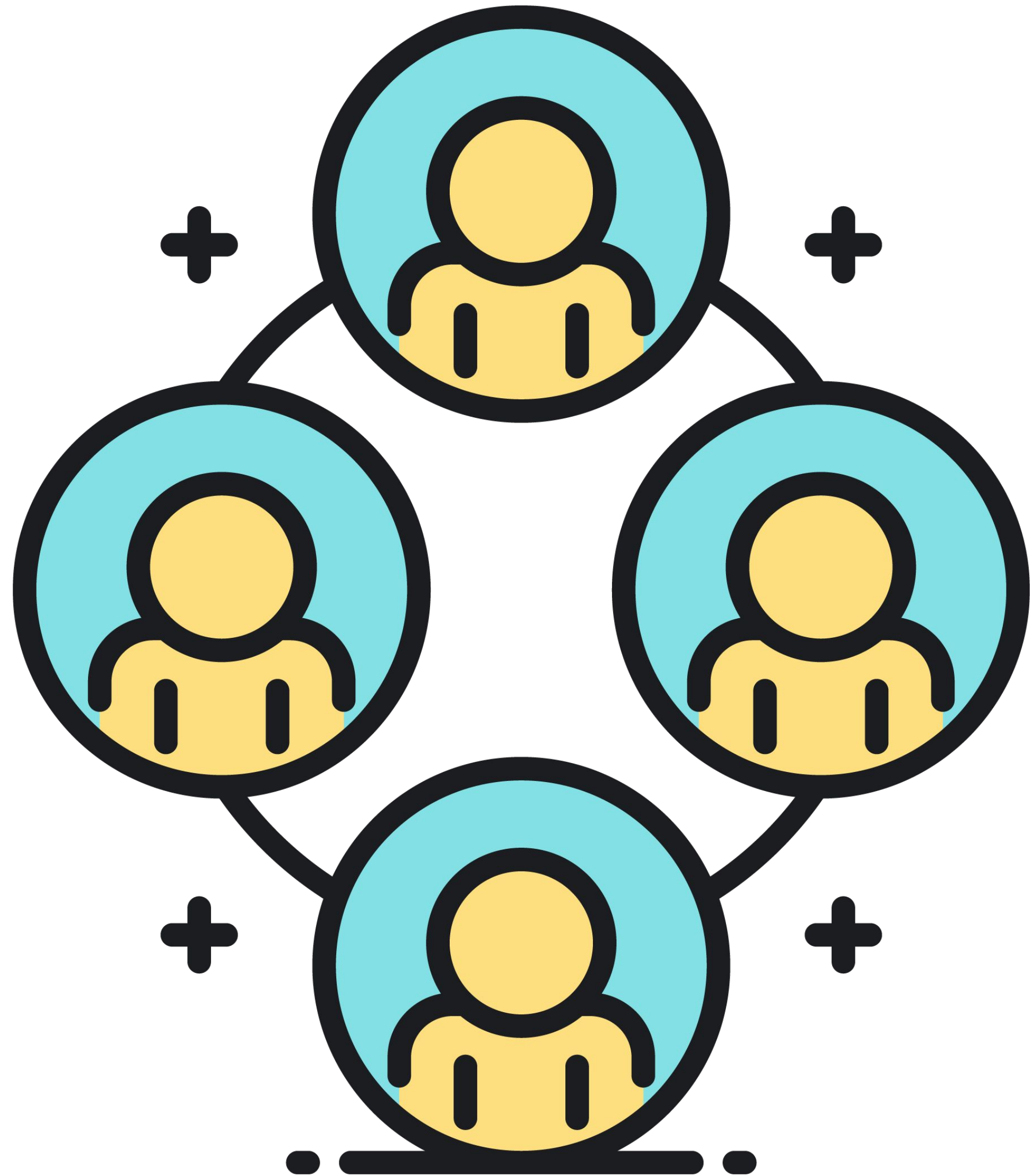


# Moving to Online Teaching

- Start with the learning objectives
- Set clear expectations for interaction and behavior
- Be concise and engaging
- Rethink assessment

# Universal Design for Learning (UDL)

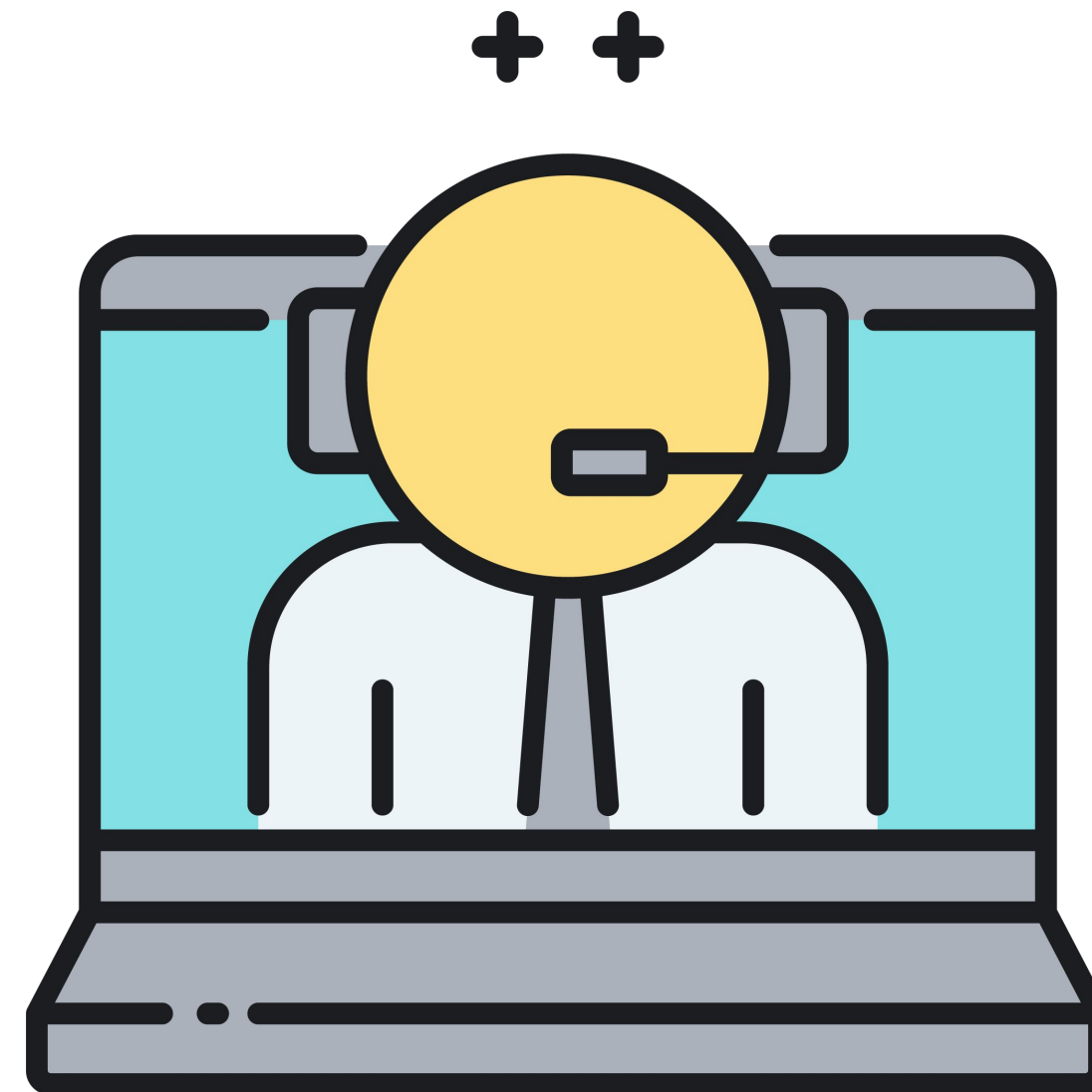
- Engagement
- Representation
- Action & Expression



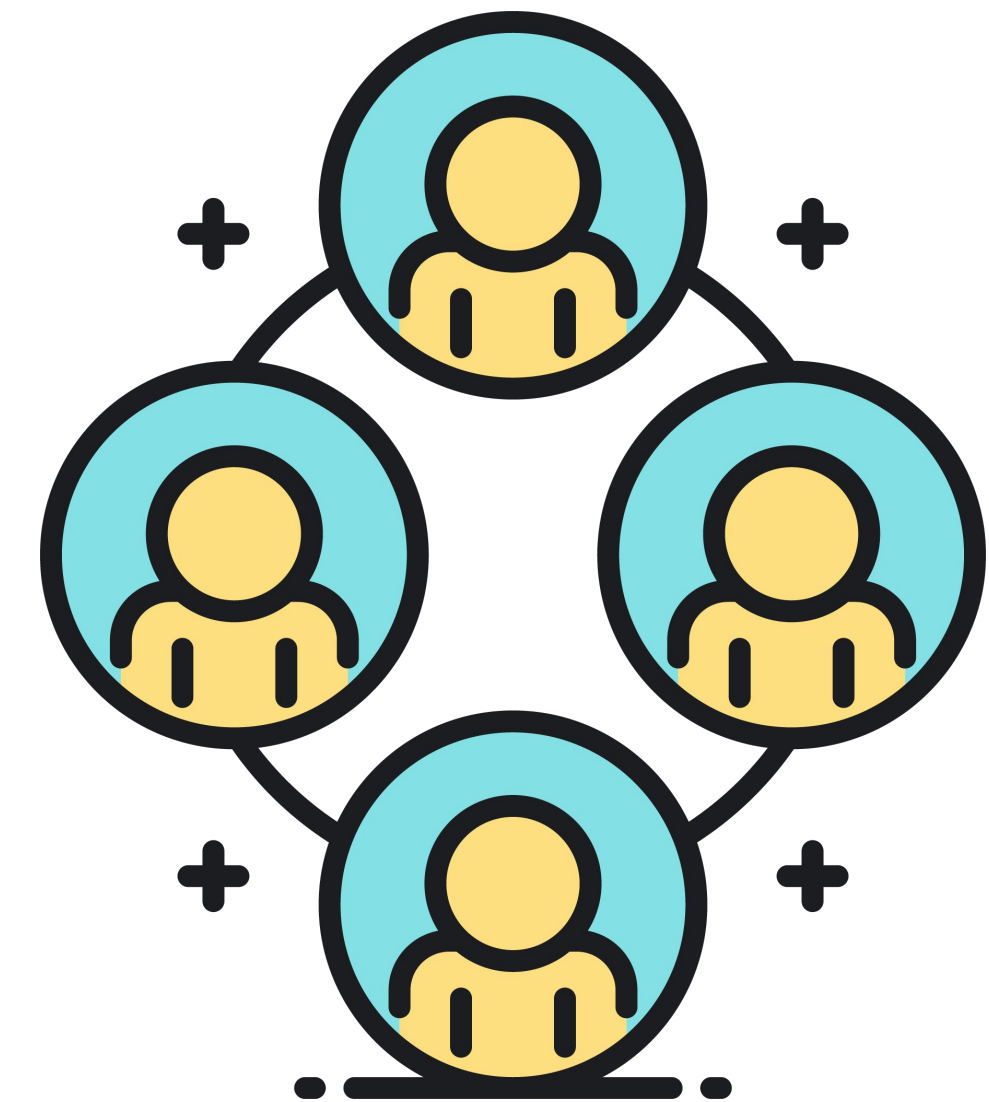
## Trauma-Informed Approach



## Converting to Online Teaching



## Universal Design for Learning







**Thank you!**  
**Q & A Time**